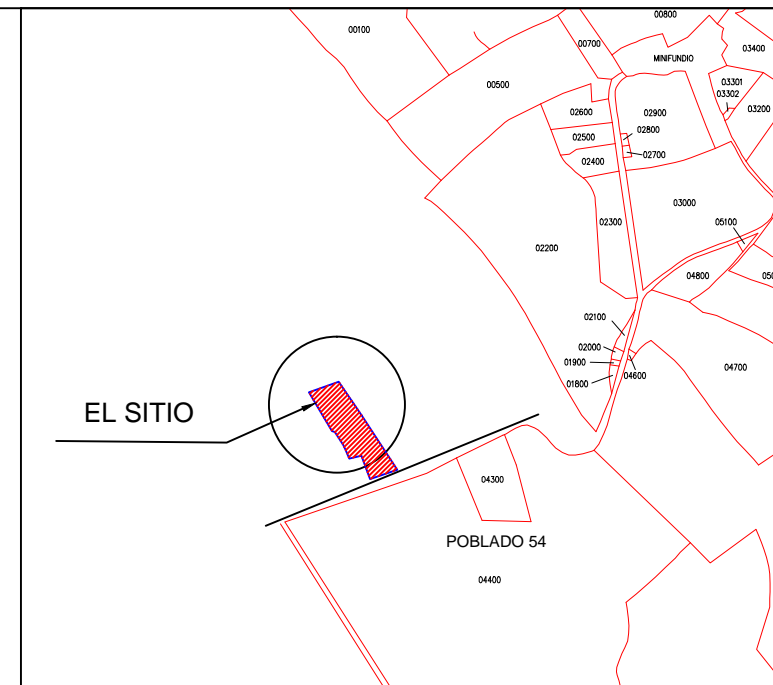
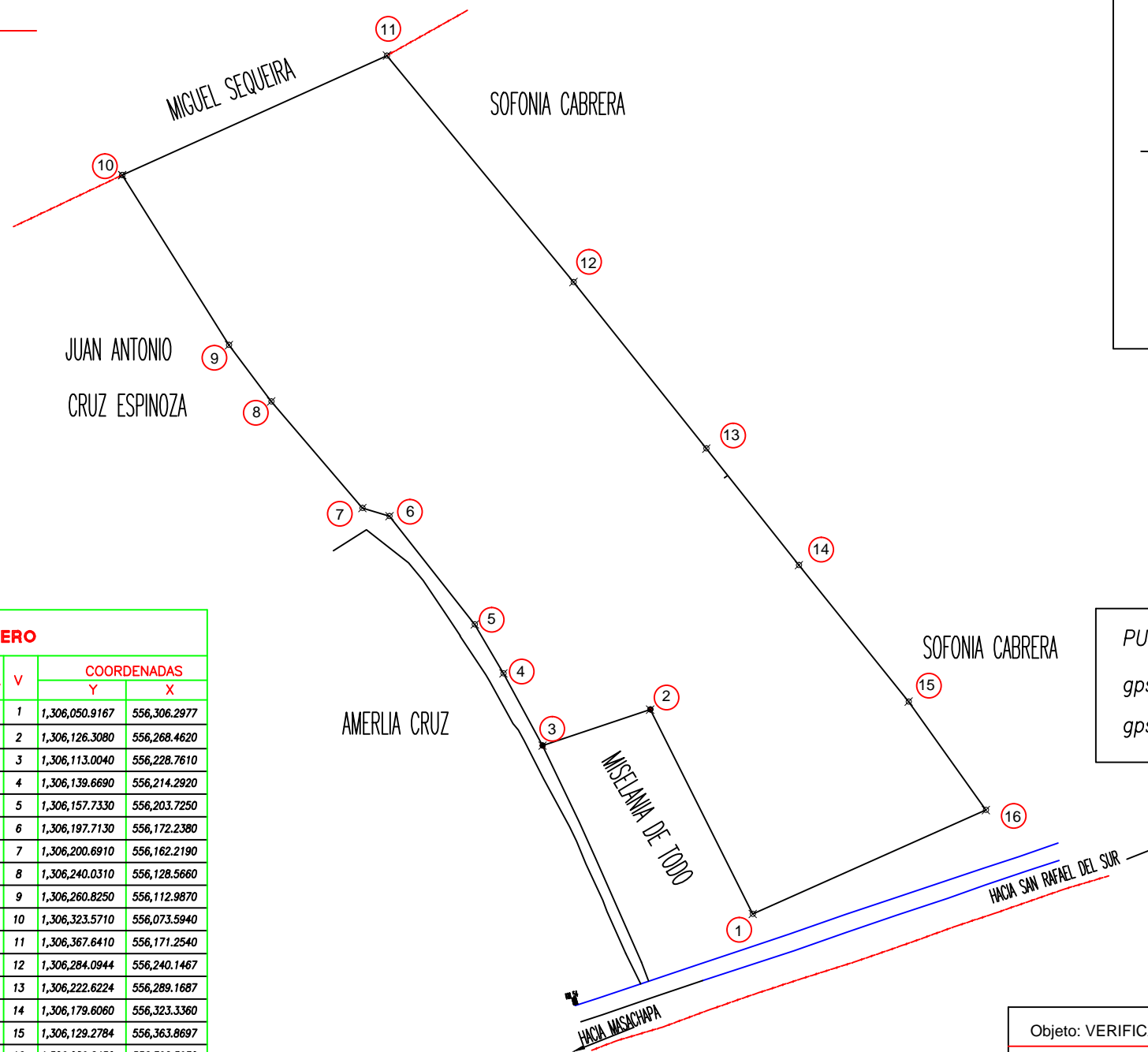
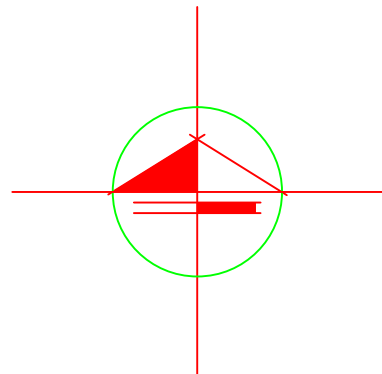


PROYECTO URBANIZACION 54
LEVANTAMIENTO PLANIMETRICO Y ALTIMETROCO



ESQUEMA DE LOCALIZACION
SIN ESCALA

AREA = 36,914.4258 m²
5MZ 2359V2

DERROTERO							
LADO	EST	PV	RUMBO	DISTANCIA	V	COORDENADAS	
						Y	X
					1	1,306,050.9167	556,306.2977
1	2	N 26°39'01" W	84.35	2	1,306,126.3080	556,268.4620	
2	3	S 71°28'25" W	41.87	3	1,306,113.0040	556,228.7610	
3	4	N 28°29'07" W	30.34	4	1,306,139.6690	556,214.2920	
4	5	N 30°19'36" W	20.93	5	1,306,157.7330	556,203.7250	
5	6	N 38°13'22" W	50.89	6	1,306,197.7130	556,172.2380	
6	7	N 73°26'46" W	10.45	7	1,306,200.6910	556,162.2190	
7	8	N 40°32'42" W	51.77	8	1,306,240.0310	556,128.5660	
8	9	N 36°50'27" W	25.98	9	1,306,260.8250	556,112.9870	
9	10	N 32°07'17" W	74.09	10	1,306,323.5710	556,073.5940	
10	11	N 65°42'44" E	107.14	11	1,306,367.6410	556,171.2540	
11	12	S 39°30'33" E	108.29	12	1,306,284.0944	556,240.1467	
12	13	S 38°34'17" E	78.63	13	1,306,222.6224	556,289.1687	
13	14	S 38°27'35" E	54.93	14	1,306,179.6060	556,323.3360	
14	15	S 38°50'52" E	64.62	15	1,306,129.2784	556,363.8697	
15	16	S 35°28'10" E	49.16	16	1,306,089.2450	556,392.3930	
16	1	S 66°00'08" W	94.24	1	1,306,050.9167	556,306.2977	

PUNTO	NORTE(Y)	ESTE(X)	ALTURA(Z)
gps1	1,306,113.004	556,228.761	46.0199
gps1	1,306,126.308	556,268.462	48.1591

Objeto: VERIFICACION DE AREAS	UBICACION: KM 54 CARRETERA POCHOMIL MUNICIPIO SAN RAFAEL DEL SUR DEPARTAMENTO DE MANAGUA
ENAJ: JUAN ANTONIO CRUZ ESPINOZA	Ejecutó : TOP. JUAN F. UBEDA C.
ADQ: CORPORACION MONTELIMAR S.A	Lic. Cat. No. JUC100342
	Firma :
Escala : 1 / 2000	Fecha: 02 DE JULIO DEL 2016